



www.avon-tech-solutions.co.nz
info@avon-tech-solutions.co.nz

Nemerix Bluetooth GPS Utility – Getting Started Guide

License

A copy of the GNU General Public License is provided in the file License.txt.

This program is free software; you can redistribute it and/or modify it under the terms of the GNU General Public License as published by the Free Software Foundation; either version 2 of the License, or (at your option) any later version.

This program is distributed in the hope that it will be useful, but WITHOUT ANY WARRANTY; without even the implied warranty of MERCHANTABILITY or FITNESS FOR A PARTICULAR PURPOSE. See the GNU General Public License for more details.

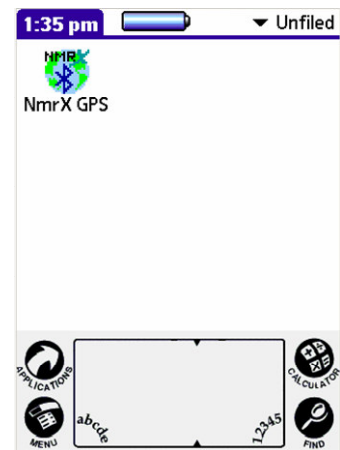
You should have received a copy of the GNU General Public License along with this program; if not, write to the Free Software Foundation, Inc., 51 Franklin Street, Fifth Floor, Boston, MA 02110-1301 USA.

Installation and Operation

Use this application to reset or configure NMEA output from a Nemerix chipset Bluetooth GPS.

Install the PRC file on to your Palm Device, either by running the Setup.exe file provided or by double clicking on the NemerixBT.prc file.

Once installed your Palm Device will have an icon for “NmrX GPS”. Tap the icon and the application will start.



At launch, you will get a message “Unregistered CASL Compiler” because the Freeware version of the CASL Compiler was used to develop this Freeware application. Find out more about CASL at <http://www.caslsoft.com>.

Tap OK to continue.



Tap the "Connect to GPS" button to open the BT Port. After a connection is made, the button label will change to "Disconnect GPS".

Use the "Factory Reset", "Hot Start", "Warm Start" or "Cold Start" buttons to force these events. The Nemerix BT GPS should respond to them with an "info and version" message.

Choose the NMEA sentences you require by checking the appropriate boxes. Set the interval (in seconds) that each is sent using the dropdown boxes next to the sentence abbreviation.

Commands you send are echoed in the text box with a ">" prefix. Tap and hold the text box to freeze the displayed information.

A GPS Status window is not provided but you can review the NMEA strings in the text box. Use cotoGPS, CetusGPS, GPS Tester or your favourite GPS application if you want a graphical presentation of this information.

You can close the BT port by tapping the "Disconnect GPS" button. It is also closed when you open another application.

The BT address of the last GPS you connected to is retained and this app will attempt to connect to it first when you again tap "Connect GPS". If it is not found the usual BT discovery will occur.

Tap on the Menu Button or the "NemerixBT GPS" title bar to open the options menu. From here you can choose the Help or About forms.

